

RAILTON MEEKS



17 Highmarsh Crescent

Didsbury, Manchester, M20 2LU

£1,850 Per Calendar Month

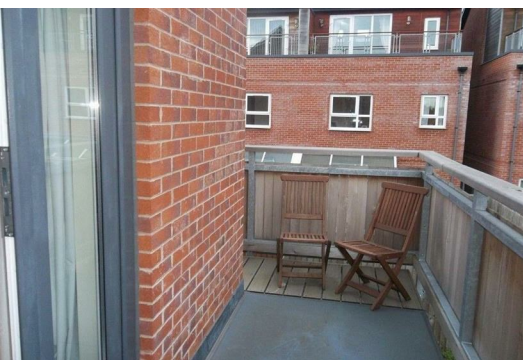


Charming and Well-Maintained Family Home in the Heart of West Didsbury

Perfectly positioned in one of West Didsbury's most sought-after locations, this beautifully maintained family home offers spacious, stylish living with character and charm throughout.

The welcoming living room features a stunning bay window overlooking the front garden and elegant laminate flooring — a perfect space to relax or entertain. The modern kitchen is fitted with attractive wooden units, a stainless steel range, and a sleek new worktop, complemented by a utility room and contemporary downstairs bathroom for added convenience.

Upstairs, you'll find three generous double bedrooms, each offering excellent storage and natural light. Bedroom 1 enjoys access to a private balcony, while Bedroom 2 benefits from its own en-suite bathroom. In addition to the three bedrooms, there is also a separate study, ideal for home working or a peaceful reading space.



Area Map



Floor Plans



Energy Efficiency Graph



These particulars, whilst believed to be accurate are set out as a general outline only for guidance and do not constitute any part of an offer or contract. Intending purchasers should not rely on them as statements of representation of fact, but must satisfy themselves by inspection or otherwise as to their accuracy. No person in this firms employment has the authority to make or give any representation or warranty in respect of the property.